

EasyPREP AutoCHEM

Automated COD Analysis made easy

- Fast automated COD analysis
Mix, heat, cool and analyze samples in one system
- Complies to ISO 15705 and EPA 410.4
- Barcode identification
- Export to LIMS, Excel and more



SCP SCIENCE

Providing Innovative Solutions to Analytical Chemists


QUANTANALITICA

Via Marco D'Oggiono 29
23848, Oggiono (LC)

Tel: +39 0341260384 Fax: +39 0341574293
email: info@quantanalitica.com

Automated COD Analyzer

Lab Automation Saves Time - Improves Precision



OVERVIEW

- The **EasyPREP AutoCHEM** is an automated COD analyzer capable of analyzing up to 67 samples per rack.
- Complies to ISO 15705 and EPA 410.4.

ADDITIONAL FEATURES

- Easy-to-learn software makes lab implementation quick and simple
- Handles volumes from 100 ml.

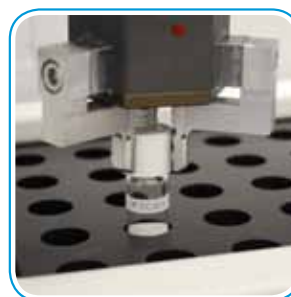
BENEFITS

- Increase productivity by performing off-hours operations automatically
- Eliminate mistakes through technician fatigue and inattention
- Reduce labor costs

TYPICAL SAMPLE PROCEDURE

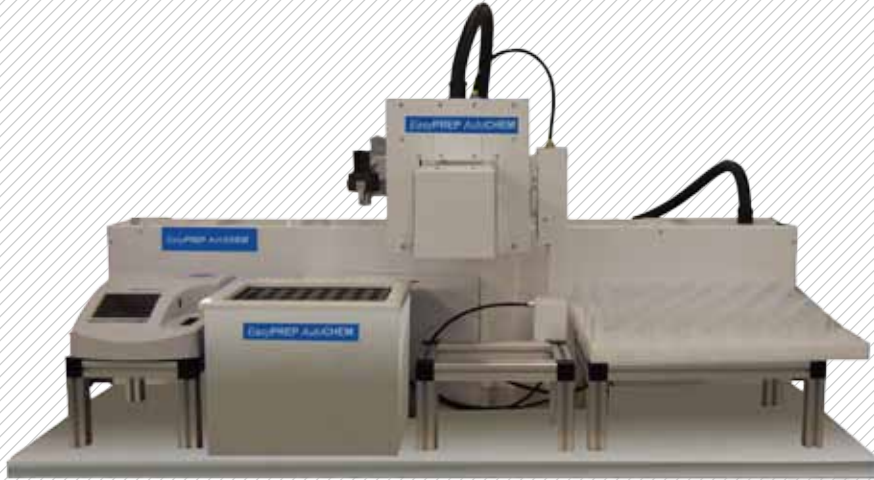
- Samples are placed in the 67-position sample rack.
- An aliquot of the sample is placed in an uncapped 16 mm COD tube. The COD tube rack may hold up to 67 tubes.
- An XYZ-sample arm transports the COD tube to other stations
 - Decapping station
 - Digestion block station (capacity 67 **DigiTUBE**s)
 - Digest samples for two hours at 148 degrees Celcius
 - Cool tubes
 - Mixing shaking station
 - PC controlled photometer station
- Data is recorded and exported to LIMS
 - Barcode identification





Automated COD Analyzer

Lab Automation Saves Time and Improves Precision



EasyPREP PUMP

SAMPLE DELIVERY SPECIFICATIONS:

- Software controlled, precision motorized syringe pump
- Sample probe in acid resistant PEEK
- Precision: Using 1ml syringe
 - 50 uL Minimum dispensing/dilution volume
 - RSD<1% for 1 ml
 - RSD<3% for volumes>1 ml
- Washing station to clean the inside and outside of probe

Using the Configuration Chart below, choose the correct syringe and probe to suit your sample needs.

SPECIFICATIONS		
Dimensions	Length	1448 mm
	Depth	660 mm
	Height	600 mm
	Weight	80 kg
Working Area	Length	630 mm
	Depth	370 mm
Technical Specifications	Accessories	Vortex Shaker
		Mineralisation block
		Spectrophometer
	Batch size	50 ST-COD tubes

COD DIGESTION TUBES		
Description	Volume	Catalogue #
COD Digestion Tubes (0-150 ppm)	25 + 1 QC	250-130-006
COD Digestion Tubes (0-1500 ppm)	25 + 1 QC	250-130-016
COD Digestion Tubes (0-15000 ppm)	25 + 1 QC	250-130-026
COD Standard 100 ppm O ₂	125 ml	250-130-512
COD Standard 100 ppm O ₂	500 ml	250-130-550
COD Standard 100 ppm O ₂	1 L	250-130-551
COD Standard 1000 ppm O ₂	125 ml	250-130-602
COD Standard 1000 ppm O ₂	500 ml	250-130-600
COD Standard 1000 ppm O ₂	1 L	250-130-601
COD Standard 10000 ppm O ₂	125 ml	250-130-652
COD Standard 10000 ppm O ₂	500 ml	250-130-650
COD Standard 10000 ppm O ₂	1 L	250-130-651
CRM for COD, Low Level (200 ppm)	20 ml	140-715-101
CRM for COD, Low Level (1000 ppm)	20 ml	140-715-102

CONFIGURATION CHART FOR ROBOTIC SAMPLE HANDLER		
		Catalogue #
EasyPREP AutoCHEM	Automated COD Instrument	010-450-001
Tapered SS needle		010-400-022

MK-EasyPREP_AutoCHEM-1.0-IE

CANADA / USA

Tel.: (800) 361-6820
Fax: (800) 253-5549

FRANCE

Tel.: +33 (0) 1 69 18 71 17
Fax: +33 (0)1 60 92 05 67

CHINA

Tel.: +86 (10) 58032301
Fax: +86 (10) 58032302

INTERNATIONAL

Tel.: +1 (514) 457-0701
Fax: +1 (514) 457-4499